

Section #4-



This section is due on Thursday, April 8, 2010.

You will need to prepare for the presentation and attend the Churchill Science Fair. Make sure to have the presentation ready, along with your final report, and project display.

PREPARING YOUR PRESENTATION:

Presentations are usually given after all of the science fair projects have been set up. Preparing for your presentation is not hard. Since it requires some time and practice do not wait for the night before to begin.

Follow these steps for a good presentation (*Write 2-3 sentences for each of the five (5) steps. Practice your presentation. Then ask an adult to listen while you practice again.*):

- Tell your research question and hypothesis.
- Explain your experiment.
- State your results.
- Summarize your conclusion.
- Describe what you learned and how this information could be applied to future learning.

The goal of a science fair is to let you solve a problem as a scientist would. Though scientists may not get the results they want, their findings can be used in future studies.

Your presentation will be better if you dress neatly and are prepared. If you do not like to talk in front of people, practice your presentation in front of a mirror or use a tape recorder. Practice several times, until you are ready for friends or family to listen. Give them this paper so they can see that you cover all five (5) steps.

Above all, be interested in your project. Your enthusiasm will make others interested in your project too. Don't forget your folding table!!!

Building Your Display

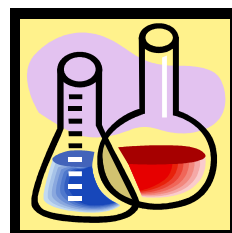
Now that you have performed the scientific testing and research, you will want to display your findings for others to see and understand. Displays should be neat and informative. When placed on tables they should be:

- Self-supporting and strong
- Large enough to show charts, pictures, and information
- Tall enough for viewing at eye-level

Materials often used include sturdy cardboard or plywood joined together with hinges, rings, heavy-duty tape, or twine. Large cardboard boxes can be cut to form displays. These materials can be covered with colored paper, fabric, or paint. You can also find ready-made display boards at office supply stores.

Before you build your display, consider:

- What materials will be easily attainable?
- What materials are free or inexpensive?
- What design would be the best for displaying my project?



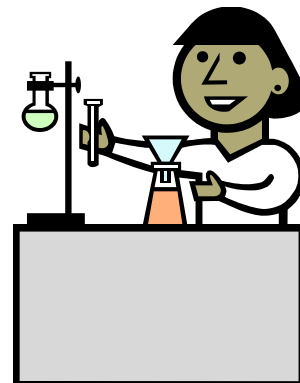
Some common displays look like the attached sample.

- A. First, design your display on a sheet of paper. You will hand in your sketch to Miss Klappauf or Mrs. Lincoln with your final copy report on March 30th.
- B. Remember to list the materials you need for your display.
- C. Now, you are ready to gather materials and create your display. The actual display is not due until the date of the Churchill Science Fair- April 8th).
- D. After building your display board, arrange your pictures, charts, and graphs in a logical order. Include your hypothesis, procedure, results, and conclusions. The title of your project should be written boldly. Choose colors that look good together.

Please Read This!!!

These are your final directions for the big day...

WHAT...	Churchill Science Fair
WHEN...	April 8 th , 2010
WHERE...	Churchill Gymnasium
WHO...	3 rd and 4 th Grades
PURPOSE...	To develop a deeper appreciation and understanding of science



FINAL GUIDELINES:

- 1) Limit your exhibit space to an area of 4 feet by 3 feet.
- 2) Projects must be the students' own work, but may have been completed with a partner.
- 3) Safety rules include:
 - a) No hazardous chemicals, open flames, torches, or burners.
 - b) No vertebrate animals.
- 4) Students need to supply their own card tables and (if necessary) extension cords.
- 5) Students must notify Miss Klappauf or Mrs. Lincoln when they turn in their Final Draft Reports if they require close proximity to an electrical outlet.
- 6) You will be assigned a number when you bring your materials to the gym for the Churchill Science Fair. Find your number on the walls or the floor. This is where you should put your materials when you arrive.
- 7) All required forms and activities (with names and room #'s) should have been turned in on or before the due dates listed.

DISPLAYS AND DIRECTIONS:

All entries will be on display in the gym, during the school day of April 8th for the students to view. You and your child may drop off the materials needed for the science fair either after school on Wednesday, April 7th from 3:05-4:00 P.M. or on Thursday morning, April 8th, before school. The students will be allowed to set up their projects from 7:45-8:15 A.M. At 8:15 A.M. they will go to their classrooms until they are called down to the gym at approximately 9:00 A.M. From 9:10-10:50 A.M. they will be presenting their projects to each class and some special guests. They will eat lunch at their regularly scheduled times. At 1:00 P.M. all students participating in the science fair will return to the gym to finish presenting to the other classes. They will return to their own classrooms at 2:40 P.M. and go home as they normally do. Please return to school no earlier than 6:15 P.M. for night presentations. From 6:30-7:30 P.M. children will present to their parents and other visitors. At 7:30 P.M. they will need to clean up, pack up, and take home all materials.

Thank you for all of your hard work and dedication to the Churchill Science Fair. You have done an exceptional job. We can't wait to see the final projects!!!